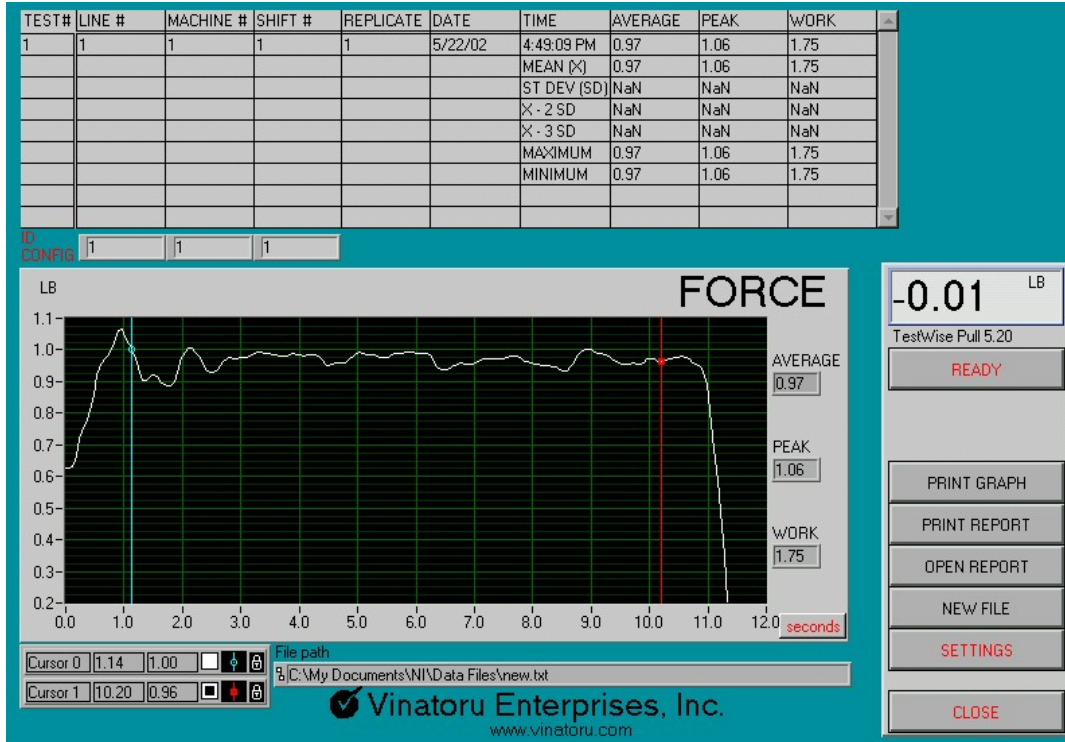


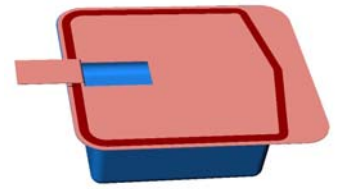
TestWise Pull 5.20 Software

Data Collection from a Digital Force Gauge

Specially designed to peel a 1" wide sample according to ASTM F88



Applications:



1" Wide Tray Samples



1" Wide Pouch Samples

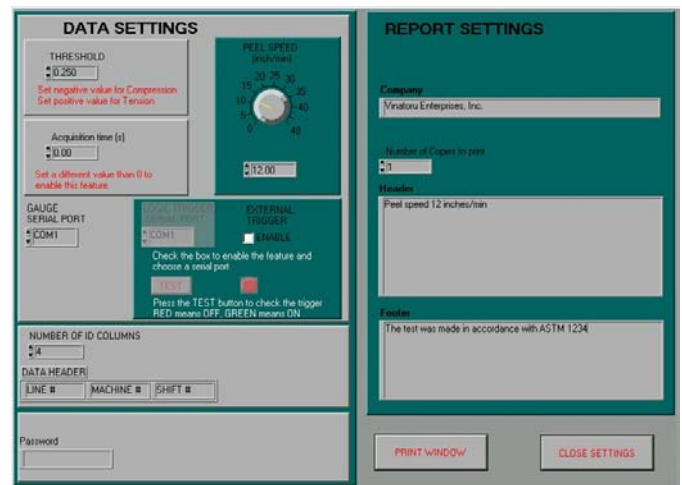
Data collection window

Standard Features:

- Graphic representation of peel force vs. distance or force vs. time
- Calculates the average force, the overall peak and the area under the curve for each test. The first and last 10% of the test are not taken into consideration
- The cursors are set at 10% and 90% of the test length
- Statistical calculations (\bar{x} , σ , $\bar{x}-2\sigma$, $\bar{x}-3\sigma$, min & max)
- Automatic detection of serial port and gauge units of measurement
- Works in both compression or tension modes
- User selectable trigger method and length of the data acquisition
- All data is saved in text format for compatibility with other software packages
- Automatic field increment
- Supports printed report

Price List

TestWise Data Collection Software	\$ 875
Data Cable (required for data collection)	\$ 75
Overnight Shipping	\$ 40



Settings window



Vinatoru Enterprises, Inc.
230 West Parkway, Unit 7-1, Pompton Plains NJ 07444

tel. (973) 616-6800 fax (973) 616-9444
E-mail info@vinatoru.com
visit us at www.vinatoru.com